

SOHO FAÇADE

Lot 661 Fisher Street, Rochedale

# Hurley 24

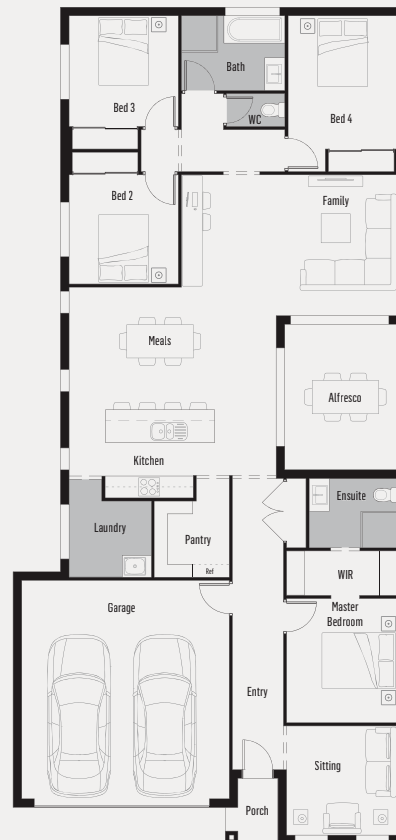
HOME PRICE: \$229,000  
LAND PRICE: \$525,000

From \$754,000\*

Land Size	425m <sup>2</sup>
Lot Width	12.5m
Overall home size	222.39m <sup>2</sup>
Home Length	23m
Home Width	10.8m

## INCLUSIONS

- Designer front façade
- Colourbond roof (promotion included)
- LED down lights throughout (promotion included)
- Higher ceilings 2590mm throughout (promotion included)
- Driveway, porch and path (promotion included)
- Floor coverings throughout
- Landscaping to front yard
- Stone bench tops to kitchen, bathroom, ensuite
- Lifetime structural guarantee



LUXURY, COMFORT AND STYLE  
WE'VE GOT IT COVERED!

- ✓ COLOURBOND ROOF UPGRADE
- ✓ LED DOWNLIGHTS TO TOTAL HOME
- ✓ HIGHER CEILINGS THROUGHOUT
- ✓ DRIVEWAY, PORCH AND PATH

TAKE ALL 4  
FOR ONLY  
**\$10,000**



CANVAS  
Series

SEIJA TUPILA 0447 564 833 SEIJA.TUPILA@PRIVIUMHOMES.COM.AU | 1300 002 268 WWW.PRIVIUMHOMES.COM.AU