



Maleny 215 at Arise
 LOT 672 Splendour Street *Rochedale*

\$727,062

HOUSE AND LAND PACKAGE



4 +

2 Living Areas



3



2

House Area:

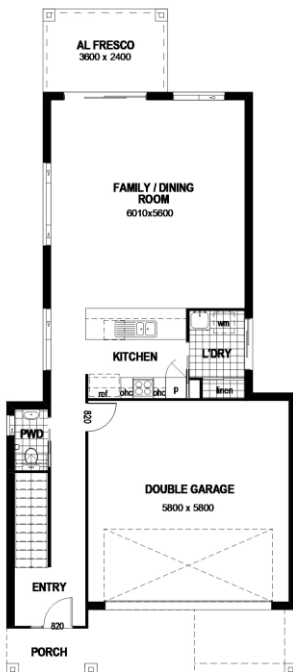
215m²

Land Area:

312m²

Specifications:

Activate Range



Inclusions:

- Stone Bench Tops to Kitchen, Bathrooms
- Beko 600mm Stainless Steel Appliances
- Rangehood Ducted to Outside
- Floor Coverings
- 2590 ceiling height
- Driveway/ Front Landscaping/ Letterbox
- Air Con to Master and Living
- LED downlights and Ceiling Fans Throughout
- H1 Slab/ N2 Classification
- Whirly Bird Roof Ventilator
- 30 Year Structural Guarantee
- 12 Month Maintenance Period
- 5 Year Extended Warranty on Beko Appliances

James Watson - 0410 476 444

james@invisionhomes.com.au

www.invisionhomes.com.au / QBCC License 1089281

All Images are for illustrative purposes only
 and all dimensions are approximate



**Building the
 Queensland
 Lifestyle**